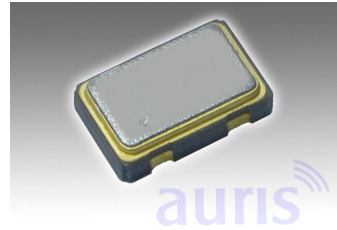


Features

- Small size 5x3,2mm
- Temperature-compensated
- High accuracy

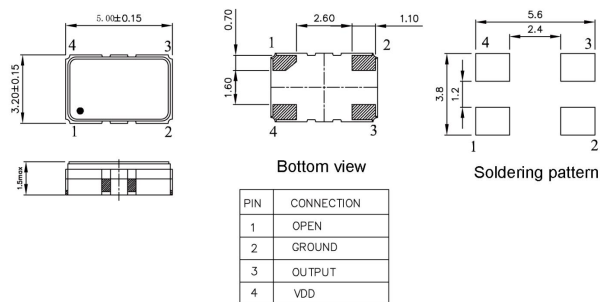


ATCQO5032

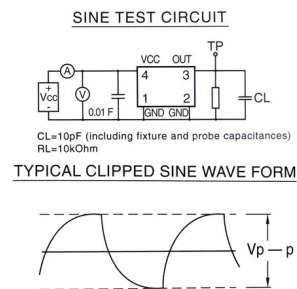
Specification

Type	ATCQO5032 Clipped Sine Wave	
Frequency Range	6,40MHz ~ 52,00MHz	
Frequency Tol. (25°C±3°C)	±0,5ppm, ±1,0ppm, ±1,5ppm, ±2,0ppm, ±2,5ppm	Frequency Stability
Power Supply (Vdd)	1,8V; 2,5V; 3,0V; 3,3V	vs. operating Temp. (ppm): ±0,5; ±1,0; ±1,5; ±2,0; ±2,5
Supply Current (Idd)	6,40MHz ~ 52,00MHz = 2,0mA max.	vs. Voltage Change (±5%) (ppm): ±0,3
Operating Temperature Range	0°C ~ +70°C ~ -40°C ~ +85°C	vs Load Change (±5%) (ppm): ±0,3
Output Load	10k ohms // 10pF	vs Aging (first Year): (ppm): ±1,0
Output Voltage	0,8Vp-p min.	
Start Up Time	10ms max. <5ms typical	
Storage Temperature	-40°C - +85°C	
RoHS	compliant	
Contents Of Reel	1000 pcs	

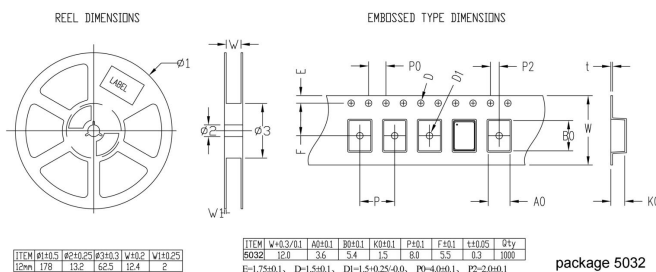
Drawing (mm)



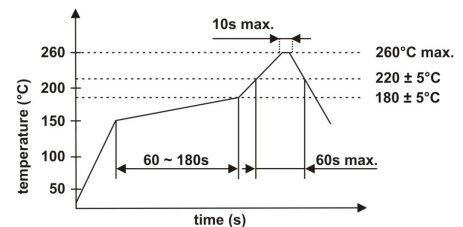
Test Circuit/Waveform



Tape dimension (mm)



Soldering profile



Order code

Part	Frequency	Type/Package	Tolerance 25°C	Tolerance	Voltage	Temperature	Option
O	- 20.00000M	- ATCQO 5032	- 1,5	- 2,5	- 3.3	- E	- TR
O=Oscillator	M=MHz	ATCQO=	±ppm	±ppm	3,3=3,3Volt 3,0=3,0volt 2,8=2,8Volt 2,5=2,5volt 2,0=2,0volt 1,8=1,8Volt	A= 0°C ~ +70°C B= -10°C ~ +60°C C= -10°C ~ +70°C D= -20°C ~ +70°C E= -40°C ~ +85°C	TR=Tape and reeled X=Special options

Please mention the output signal clipped sine wave when ordering.